

PORT SECURITY ADVICE FOR THE GENERAL PUBLIC

BACKGROUND

Thursday Island is a gazetted Security Regulated Port and is required to be compliant with the Maritime Transport and Offshore Security Act 2003. In the event of a **heightened** or **exceptional** security level being declared at the Port of Thursday Island, additional security measures will be put in place on both the land and sea around the port.

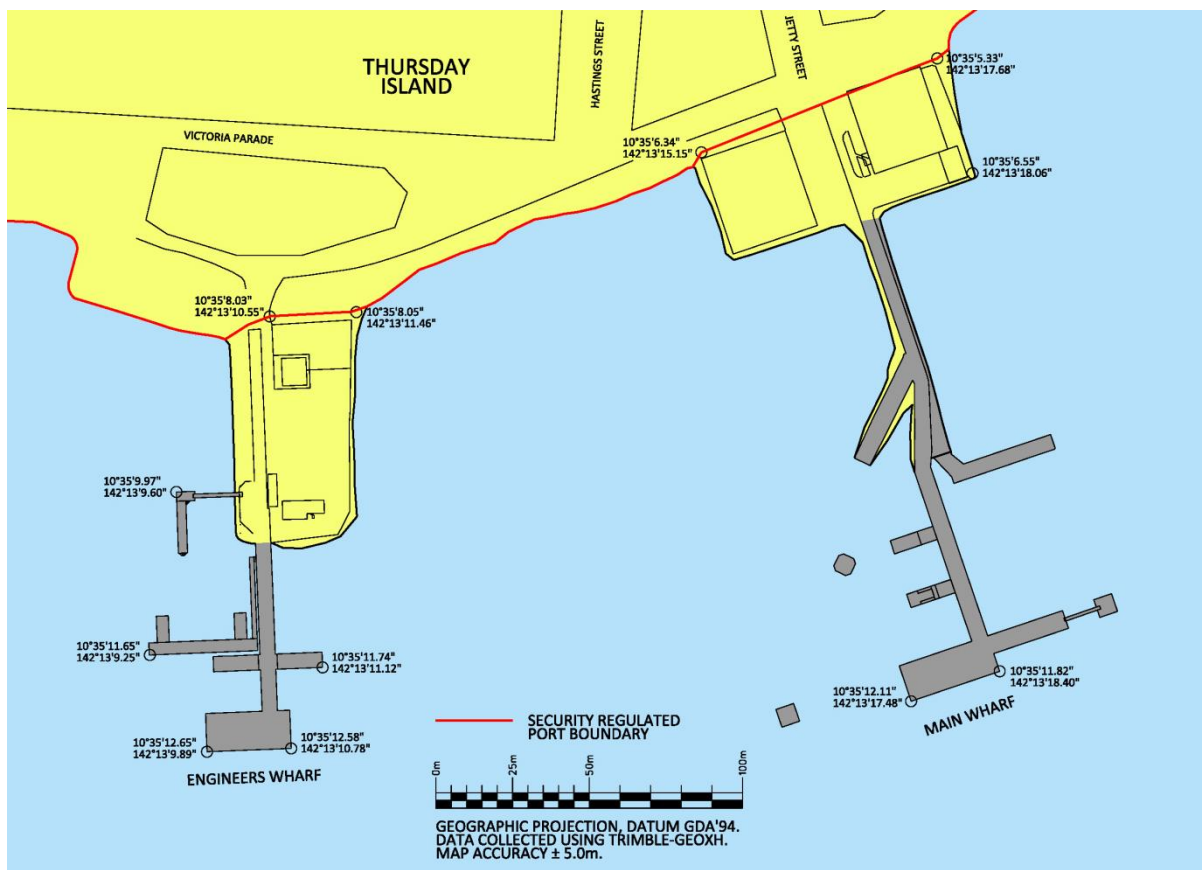
Vessels operating in the port area will need to be mindful to always observe restricted areas on the water.

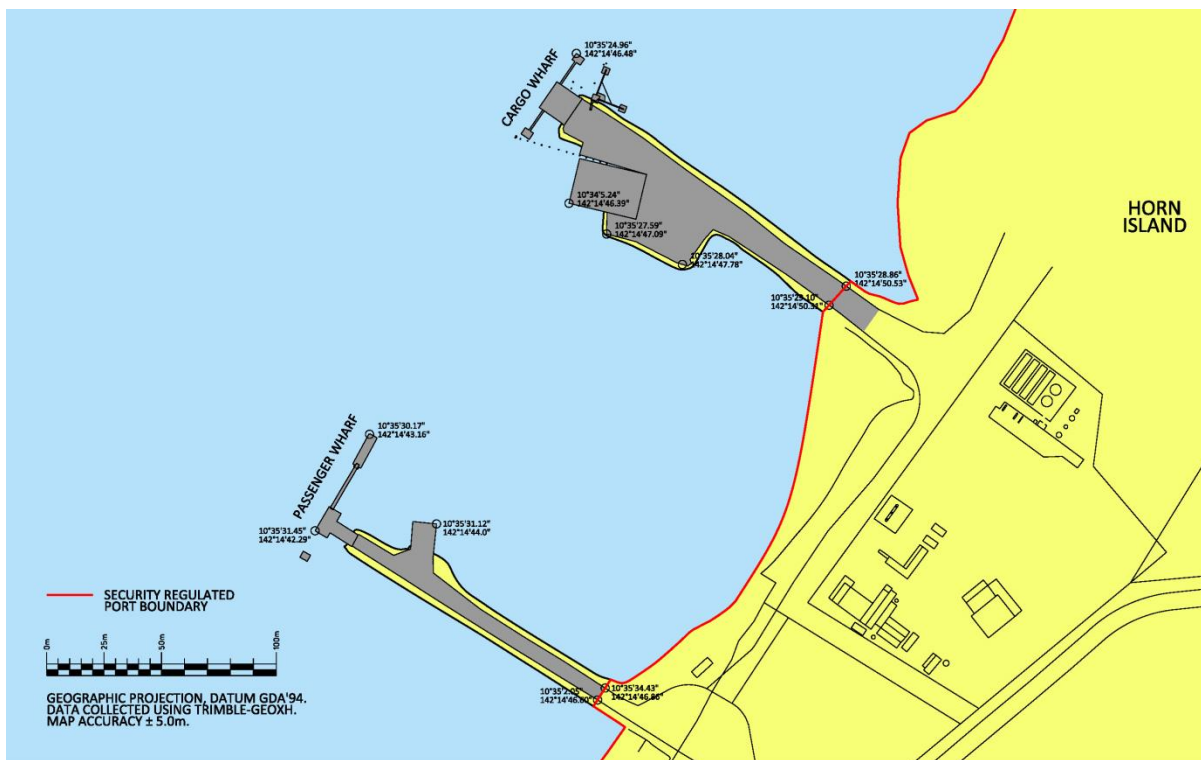
SECURITY LEVELS

The following three security levels have been adopted by the government and maritime industry across Australia.

- **Level 1 (Normal):** the level for which minimum appropriate protective security measures will be maintained in the Port of Thursday Island, day to day, normal operations.
- **Level 2 (Heightened):** the level for which appropriate additional protective security measures will be maintained, for a period of time, as a result of the heightened risk of a security incident, and
- **Level 3 (Exceptional):** the level for which further specific protective security measures will be maintained, for a limited period of time, when a security incident is probable or imminent, although it may not be possible to identify the specific target.

It is expected that Level 2 and 3 would be rare, short-term events. The Federal Government will notify ports when the security level has been raised, based on intelligence advice.





PUBLIC ACCESS TO WHARVES & WATER-SIDE

If security in the port is increased in response to a threat, (Security Levels 2 and 3), restrictions may be put in place within the port and security regulated vessels will not be permitted to berth at any port facilities. Any restrictions will take into account local conditions and vessel operators are encouraged to maintain a listening watch on VHF Channel 16. Access to the wharves may also be reduced during any period of heightened security requirements.

Entry of any unauthorised vessel (which includes fishing and recreational vessels) into any restricted zone when it is in force is a serious offence. Signs will be erected on the shore advising when the heightened security level applies and when the zones are in force.

BREACHING PORT SECURITY ZONES

Breaches of port security zones would jeopardise the security and operation of the port and anyone caught breaching the restricted zones faces heavy fines. Fines up to \$5,000 for individuals can apply.

COMMUNITY SUPPORT OF PORT SECURITY

Apart from observing the access restrictions, the general public and boat owners are asked to be on the lookout for any suspicious behaviour in the port that may indicate a security threat. This should be reported directly to Ports North either to staff in the office at the end of the main Wharf or via the telephone numbers below. Your co-operation in maintaining a safe and secure port is much valued.

These security measures have been implemented Australia-wide and Ports North and the port facility operators ask for your understanding and assistance in meeting our security obligations.

FOR INFORMATION PLEASE CONTACT:

24 hour Operations Office +61-(7)-4051 2558

Far North Queensland Ports Corporation Limited (t/a Ports North)
 ABN 38 657 722 043 / ACN 131 836 014

PO Box 594
 CAIRNS QLD 4870

Phone: +61 (7) 4052 3888
 Facsimile: +61 (7) 4052 3853
enquiries@portsnorth.com.au
www.portsnorth.com.au

